



INDRA REGENT HOTEL
B A N G K O K
Timeless Thai Hospitality In The Heart Of Bangkok

**“Timeless Thai
Hospitality in the heart
of Bangkok”**



Remind me



Message



**Stay Connected
With Comfort**



Fine Dining
Restaurant



Free
Wi-fi



Banqueting
Facility



Indra Regent Hotel-Bangkok 120/126 Rachaprarop Road,
Pratunam Bangkok 10400 Telephone +66 (0)2 208-022-33
www.indrahotel.com E-mail: sales@indrahotel.com

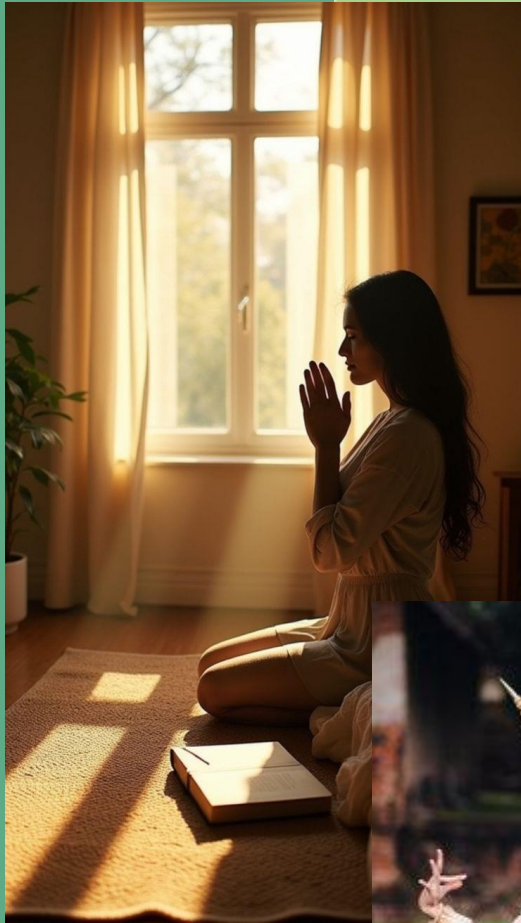


DISCOVER THE TIMELESS THAI CHARM HOSPITALITY OF INDRA REGENT HOTEL BANGKOK.

Welcome to the Indra Regent Hotel Bangkok, where timeless Thai hospitality meets modern comfort in the vibrant heart of the city. Our story began on November 1, 1971 with a grand opening graciously presided over by Her Majesty Queen Sirikit of Thailand. Since then, the Indra Regent has stood as a cherished landmark—a rare place where guests can truly see, feel, and experience the authentic warmth of Thai culture.

Today, as we embrace a new chapter, we are proud to blend our rich heritage with a fresh, contemporary spirit. Guided by our redefined philosophy of “Three Smart Memory Moments” – Iconic, Unforgettable, and Service Experience—we aim to create memories that stay with you long after your visit.

Our core values are the heart of who we are. They shape the way we operate, how we treat our guests, and how we deliver genuine hospitality. With sincerity and care, our team embodies a service culture built on warmth, respect, and passion—ensuring every guest feels truly welcomed and valued.



**A True
reflection
of Thai
hospitality
since 1971.**





AT INDRA REGENT HOTEL, our focus is you. We listen carefully, adapt to your needs, and respond with honesty, integrity, and transparency in every interaction. Inspired by the legend of Indra, we are committed to delivering service excellence in every moment of your stay. At Indra Regent Hotel, our name "Indra" is inspired by Pra In (Pra-In in Thai), the king of gods, warrior, and protector, often depicted riding the three-headed elephant, Erawan. Phra In is a prominent figure in the Thai version of the Ramayana, the Ramakien, and is honored in various regional traditions and rituals across Thailand. In tribute to this heritage, we respectfully address our male guests as "Than Chai" (Sir) and our female guests as "Than Ying" (Madam), symbolizing that our guests are like gods from heaven.

**OUR VISION OF
TRUE
TIMELESS THAI
HOSPITALITY** is

to create a sanctuary where you can restore your body, mind, and soul. From a restful night's sleep to nourishing meals and heartfelt care.



**WE PROMISE AN
EXPERIENCE THAT GOES
BEYOND COMFORT-ONE
THAT RECHARGES YOUR
INNER ENERGY AND
REMINDS YOU OF LIFE'S
SIMPLE JOYS.**

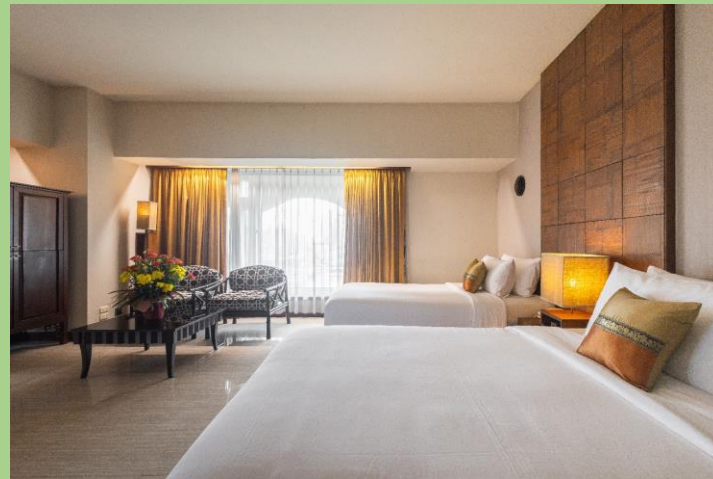
Here, at the Indra Regent Hotel Bangkok, we welcome you like family. We listen deeply. Respond swiftly, and serve sincerely-because your happiness is our greatest reward.





**DISCOVER WHERE
TO STAY IN THE
HEART OF
BANGKOK-
PRATUNAM AREA.**

Experience the Indra Regent Hotel Bangkok, where comfort, space, and timeless Thai hospitality come together in perfect harmony.



Our 450 well-appointed rooms and suites provide the perfect balance of relaxation and rejuvenation, surrounded by the vibrant energy of Bangkok's famous Pratunam shopping district. Discover where to stay for your next Bangkok getaway—a place where tradition meets comfort, and every moment is enriched by the warmth of true Thai hospitality.

Each of our rooms and suites is thoughtfully designed in the spirit of elegant Thai tradition, inspired by the iconic lotus flower— a symbol of purity, serenity, and the essence of Thai grace. Whether you are visiting Bangkok for shopping, business, or leisure. The Indra Regent Hotel offers the ideal retreat for every traveler—from solo guest and business executives to friends and families with children.

DELUXE ROOM

Experience the charm of true timeless Thai hospitality in our Deluxe Rooms at Indra Regent Hotel Bangkok- the perfect choice for both business and leisure travelers seeking comfort and style in the heart of Bangkok. Each spacious 32 sqm room is elegantly designed in a white and gold color scheme with a touch of Thai sophistication, creating a warm and relaxing atmosphere.

The Deluxe Room is available with either a super king-sized bed (6.5 feet) or twin beds (3.5 feet), and features a comfortable seating area along with city views of Bangkok. Enjoy every essential amenity for a restful stay, where comfort meets tradition and relaxation is guaranteed. Discover a space where Thai elegance and modern comfort come together- only at Indra Regent Hotel Bangkok. (Max 2 ADL + 1 Child)



SUPERIOR ROOM

Enjoy a relaxing stay in our Superior Rooms at Indra Regent Hotel Bangkok, offering 32 sqm of comfortable space designed for both leisure and business travelers. Each room is tastefully decorated in a soothing white and gold color scheme, reflecting a timeless Thai elegance. Guests can choose between one queen bed or two twin beds, with options for city or rear-facing views of vibrant Bangkok.

Our superior rooms can comfortably accommodate up to 2 adults and 1 child (under 12 years old). One child may stay free of charge when sharing existing bedding.

Experience the perfect balance of comfort, values, and classic Thai charm at the Indra Regent Hotel Bangkok- your home in the heart of the city. (Max 2 ADL + 1 Child)



STUDIO ROOM

Experience the elegance and warmth of Thai hospitality on our Studio Rooms at Indra Regent Hotel Bangkok. Each room is thoughtfully designed to offer 24 sqm, both comfort and value, making it an ideal choice for a relaxing stay in the heart of the city.

Decorated in soft white and gold tones with subtle traditional Thai accents, the room creates a serene and welcoming atmosphere. Covering 24 sqm, each studio offers a charming city view of Bangkok and comes equipped with all the essential amenities for your convenience and comfort. Guests may choose between a queen-sized bed (4.5 or 5 feet) to ensure a restful night's sleep.

This room type is recommended for a maximum of 2 adults, and may not be suitable for families with children. Enjoy the perfect blend of style, comfort, and timeless Thai charm- only at Indra Regent Hotel Bangkok. (Max 2 ADL)



DELUXE TRIPPLE ROOM

Enjoy extra space and comfort in our Special Deluxe Triple Room at Indra Regent Hotel Bangkok, thoughtfully designed for families, friends, or small groups traveling together. Each room offers 32 sqm of space and features three separate beds (3.5 feet and 3 feet), ensuring a comfortable and restful stay for every guest. The room is elegantly styled in a white and gold color scheme with subtle Thai accents, reflecting our signature timeless Thai hospitality.

Equipped with all essential amenities the Special Deluxe Triple Room provides both comfort and convenience, perfect for your next Bangkok getaway. A maximum of 1 child under 12 years old may stay free of charge when sharing existing bedding. The room can accommodate up to 3 adults, with an additional charge of THB 1,500++ per night for the third adult. Experience the ideal blend of space, style, and Thai warmth-only at Indra Regent Hotel Bangkok. (Max 3 ADL)

DELUXE FAMILY ROOM

Experience incredible comfort and extra space in our Deluxe Family Room, offering a generous 40 SQM designed for a truly relaxing family stay. The room features an elegant white-gold color scheme accented with refined Thai elements, reflecting our signature Timeless True Thai Hospitality.

Equipped with all essential amenities, the room comfortably accommodates up to 3 adults and 2 children. An additional charge of THB 1,500++ per night applies for the third adult.

DELUXE FAMILY SUITE ROOM

Experience the perfect blend of comfort, space, and Thai elegance in our Spectacular 108 sqm Deluxe Family Suite at Indra Regent Hotel Bangkok. Thoughtfully designed for families and groups, this spacious suite offers everything you need for a truly relaxing stay in the heart of Bangkok. Each suite features a super king-sized bed (6.5 feet) and two twin beds (3.5 feet), providing a restful night's sleep for everyone. Located on the higher floors, the suite offers beautiful city views and a full range of modern amenities. Including a well-appointed bathroom with shower.

The interiors are tastefully decorated in an elegant Thai country estate style, creating a serene ambiance that reflects the warmth of true Thai hospitality. A maximum of 1 child under 12 years old may stay free of charge when sharing existing bedding. The suite accommodates up to 4 adults, and no additional charge applies for the 3rd and 4th adult or child staying in the room.

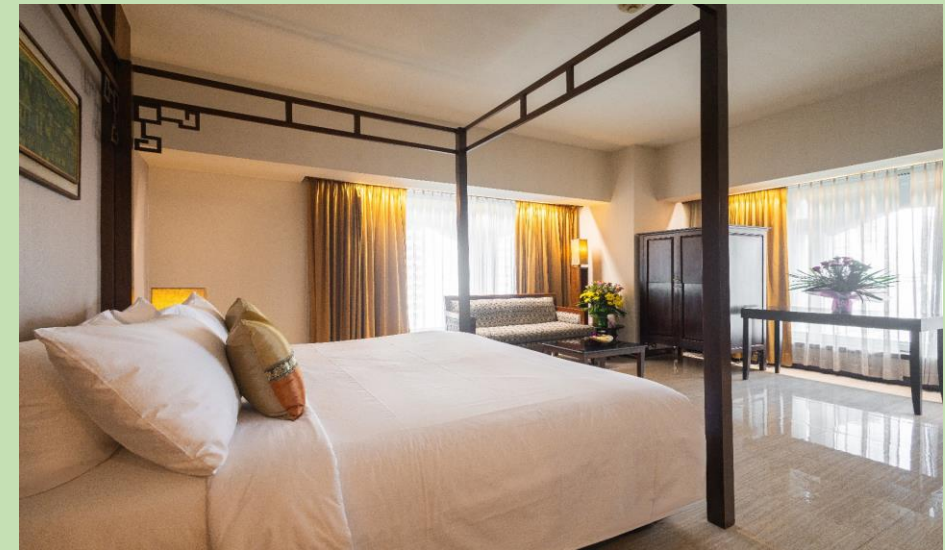


FAMILY SUITE ROOM

Enjoy an exceptional level of space and comfort in our Family Suite at Indra Regent Hotel Bangkok, offering an impressive 108 sqm of beautifully designed living space—perfect for families seeking a relaxing retreat in the heart of the bustling Pratunam shopping district.

The suite features a queen-sized bed (5 feet) and two twin beds (4.5 feet and 4 feet), ideal for both parents and children. Each Suite includes two large bathrooms, one with bathtub and another with as shower room, ensuring convenience and privacy for everyone. Elegantly decorated in a Thai country estate style, the Family Suite combines traditional charm with modern amenities to create a warm and homely atmosphere.

Guests can enjoy a full range of in room facilities designed for total relaxation and comfort. A maximum of 1 child under 12 years old may stay free of charge when sharing existing bedding. The suite accommodates up to 4 adults, and no additional charge applies for the 3rd and 4th adult guests. Create unforgettable family memories surrounded by true Thai hospitality and the vibrant energy of Bangkok—only at Indra Regent Hotel Bangkok.



JUNIOR SUITE ROOM

Discover the charm of Thai elegance and timeless comfort in our Junior Suite – a rare spacious of 50 sqm retreat in the heart of Bangkok. Perfect for both business and leisure travelers, as well as families seeking extra comfort, each suite combines thoughtful design with warm Thai touches that make every stay memorable. Our Junior Suite features generous layout with a large bathroom area, ensuring relaxation and convenience throughout your stay. Guest may choose between a super king bed (6.5 feet), a queen bed (5 feet), or twin beds (4.5 feet and 4 feet) to suite their preference.

A maximum of 1 child under 12 years old may stay free of charge when sharing existing bedding. The suite can accommodate up to 2 adults, with an additional charge of THB 1,500++ per night for the third adult.

Experience true Thai hospitality and comfort beyond compare at Indra Regent Hotel Bangkok—where space, style, and serenity come together perfectly. (Max 2 ADL + 1 Child)

RESIDENTIAL SUITE ROOM

Discover the ultimate in space, comfort, and luxury in our Residence Suite at Indra Regent Hotel Bangkok-an exceptional retreat designed for those who seek a truly relaxing and memorable stay in the heart of the city. Offering an impressive 160 sqm of elegantly appointed space, the Residence Suite features two bedrooms and boasts spectacular panoramic views of Bangkok's skyline. The suite includes a large separate living room and a spacious dining area, providing the perfect setting for both leisure and family gatherings.

Each Suite is equipped with a full range of Premium Amenities, combining modern comfort with the timeless charm of Thai hospitality, with our provided private butler. A maximum of 2 children under 12 years old may stay free of charge when sharing existing bedding. The suite accommodates up to 4 adults, and no additional charge applies for the 3rd and the 4th adult guests. (3 beds all 5 F) Indulge in the Iconic experience of Bangkok living with the warmth, space, and elegance of the Residence Suite-only at Indra Regent Hotel Bangkok.



RESTAURANTS & BARS

Discover Where to Eat and Drink in the Heart of Pratunam

Enjoy a truly memorable dining experience at Indra Regent Hotel Bangkok, where a variety of culinary delights await—from fast, smart dining to elegant fine dining and relaxed bar experiences.

Savor authentic flavours at our Thai fine dining restaurant, indulge in the sophistication of our Chinese fine dining, or experience something extraordinary with our private romantic dining—available anywhere you wish within the hotel. For an even more exclusive touch, enjoy our chef's table fine dining experience, where creativity meets excellence.

Whether you're looking for a casual meal, family dinner, or intimate evening, our hotel offers the perfect restaurant and bar settings for every occasion. Feast on enticing Thai specialties and comfort classics, then unwind with cocktails and light refreshments in the Smart Relaxed Lobby Bar, the ideal spot to end your day.

At Indra Regent Hotel Bangkok, every meal is more than dining—it's a celebration of Thai hospitality, flavor, and unforgettable moments.





ERAWAN RESTAURANT “QUALITY BREAKFAST”

Our breakfast at Erawan Restaurant is thoughtfully designed to deliver exceptional quality and high-standard service from the very first moment of your day. We offer a generous selection of food and beverage choices, crafted to satisfy every preference and lifestyle.

Each morning, guests can enjoy five signature “Food Hero” dishes, beautifully presented, delicious, and prepared with premium, healthy ingredients.

These creations highlight our culinary creativity and represent must-try flavors that truly define the Erawan breakfast experience.

To provide even greater comfort and flexibility, we introduce our “Sabai Sabai Breakfast Package.” Perfect for individual travelers seeking convenience and freedom, this package allows you to enjoy breakfast anywhere and anytime within the hotel.

Simply inform our team in advance, and our dedicated staff will be delighted to serve your breakfast at your preferred location-just the right place, at the right time, in the most relaxing way.

ERAWAN RESTAURANT

“Erawan” is inspired by the legendary three-headed elephant ridden by Phra-In (Indra), the celestial king and guardian deity in Thai and Hindu mythology. Symbolizing strength, protection, wisdom, and nobility,

Erawan represents the power and grace that accompanied Phra-In into every great battle. According to myth, before Phra-In rode Erawan into war, he always began his day with a nourishing and powerful breakfast- a ritual that prepared his mind and body for victory.

This Erawan Thai Fine Dining Restaurant is therefore designed for a place where you can have a good Thai meal, as it symbolizes readiness, focus and inner strength, especially the morning tradition of the day.

Erawan restaurant carries this heritage into its concept: a place of energy and renewal- where guests start their morning with a breakfast that empowers them for the day ahead. A smart-casual dining experience, blending elegance with comfort, just like the balance of strength and serenity Erawan represents.

A connection to Thai mythology-offering a story that is memorable, marketable, and unique in Bangkok’s dining scene. A Day-to-Night transformation-from empowering breakfast to refined yet relaxed dinners, celebrating both the beginning and completion of life’s “battles”





BOTANICA RESTAURANT & CAFÉ

Botanica Restaurant is a smart-casual dining destination welcoming both in-house and non-resident guests to enjoy a unique selection of beautifully crafted lunch and dinner dishes. Designed for everyday dining and for celebrating special occasions.

Botanica offers an inviting atmosphere right in the heart of bustling Bangkok-making it one of the rare gems in the Pratunam area. Whether you are stopping by for a quick and satisfying lunch, such as freshly made sandwiches or tender roasted beef, or indulging in our signature Thai-fusion creations designed exclusively for Botanica, every plate is prepared to deliver good food, great taste, and truly enjoyable moments.

Botanica Restaurant is a smart casual dining concept offering flexible service designed to suit everyone's needs. The restaurant features 80 seats, providing a comfortable space to relax with friends while enjoying food and drinks in your own style. Botanica is open for both lunch and dinner. It is also an ideal venue for private parties, such as birthday celebrations and other special events, offering a poolside setting with views of the blue sky in the heart of bustling Bangkok.

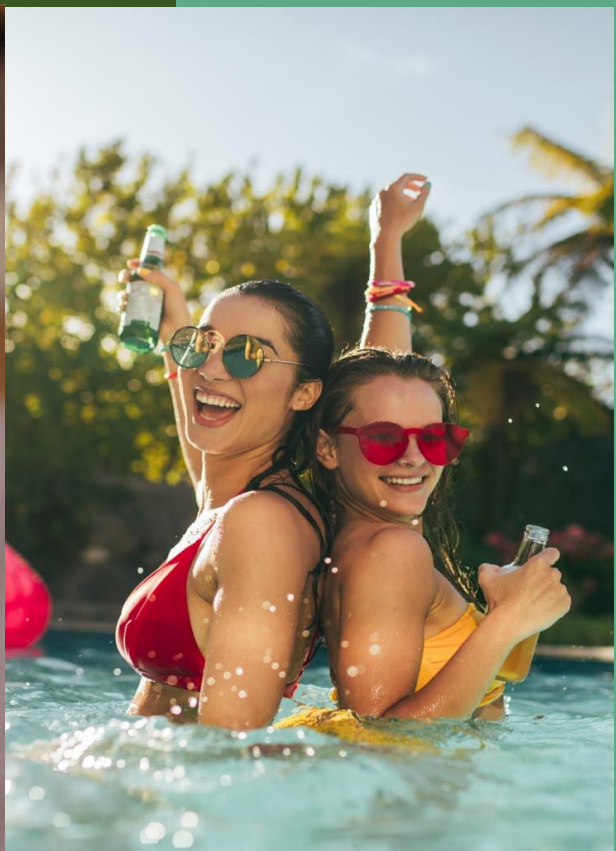
At Botanica, we are committed to giving you a dining experience that feels fresh, flavorful, and thoughtfully curated-every time you visit.

LOBBY BAR



Whether it's peaceful afternoon pause or a relaxing evening wind-down, the Lobby Bar is the perfect place to enjoy your time, recharge, and simply feel at ease. Our food & drinks here represents the pinnacle of our culinary offerings—signature creations that are not only exquisite and memorable but also thoughtfully designed to support your health and promote a longer higher-quality life.

Our Lobby Bar is a delightful retreat where you can relax, unwind, and enjoy a refreshing drink in a calm and inviting atmosphere. Whether you are in the mood for a perfectly crafted cocktail, a soothing cup of coffee, or a light refreshment, the lobby bar offers the ideal setting for every moment. Thoughtfully designed to provide comfort after a long journey or a full day of exploring Bangkok's vibrant streets, this cozy space invites you to sit back and take a well-deserved break.



POOL BAR

Our pool bar is a proud part of our longstanding history and a testament to our commitment to transforming hospitality. It offers an exceptional experience where you can relax, sunbathe, and enjoy refreshing drinks and light bites-whether you are here alone, with friends, or with family.

Our pool bar is one of the few places where you can experience timeless traditional Thai hospitality in the middle of Bangkok.

This bar is uniquely located at our main swimming pool allowing guests to sit back and enjoy stunning panoramic views of Bangkok. The breathtaking scenery makes you feel truly out of this world-an experience you simply must try.





ROOM SERVICE

Elegant & Professional

Room Service is one of our Signature in-room dining experiences. It is not just about enjoying a meal, but about creating a memorable dining experience that goes beyond expectations is truly worth trying.

Room Service Experience our attentive and caring service as we deliver delicious food and refreshing drinks straight to your door-always on time, with no waiting. Everyone order is crafted to meet your expectations, ensuring a seamless and enjoyable experience, ready whenever you are.

Our flexible room service delivers delicious food and drinks right to your doorstep. It's one of the best ways to enjoy a convenient, satisfying experience that meets all your expectations.



AFTERNOON TEA SERVICE

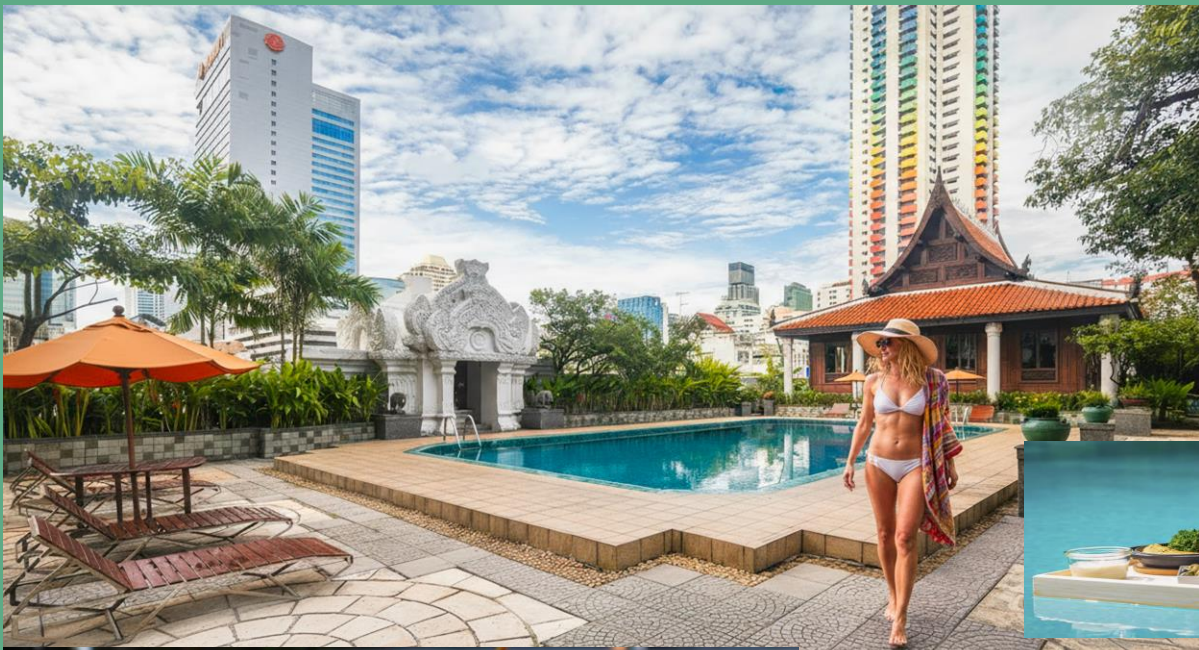
Our Afternoon Tea Service is thoughtfully designed for anyone seeking a delightful afternoon experience. Whether you are with friends, family, or simply enjoying a relaxing moment, you can savor freshly baked scones, premium teas in a warm and inviting atmosphere.

Our spectacularly designed afternoon tea experience is one of our signature offerings, allowing guests to indulge in the very best that Indra regent hotel has to offer. It's true highlight where guests can relax, savor and create memorable moments in an inviting and telephone setting.



ROMANTIC DINNER ARRANGEMENT SERVICE

Romantic dinner arrangements are one of our flexible services, thoughtfully designed to suit each guest's individual needs. Whether you prefer a relaxed, comfortable atmosphere or a romantic and elegant setting at your chosen dining venue, complete privacy within our hotel can be arranged. We are delighted to create a truly special and memorable dining experience just for you.



SWIMMING POOL

Our swimming pool is open daily from 7:am to 7pm, offering a refreshing and relaxing space for all guests. Our poolside space for all guests our poolside services are designed to cater to every, convenience, and an enjoyable experience for families, friends, or sale visitors.

Our pleasant outdoor swimming pool offers guests a tranquil oasis in the heart of the city. Surrounded by lush greenery and furnished with comfortable sun loungers, it provides the perfect setting for relaxation. Designed with lounging and lap swimming. The food offers a refreshing escape from Bangkok's busy atmosphere, complemented by a pool bar for add enjoyment.

Our swimming pool is more than just a place to swim. We offer a variety of poolside activities for children, as well as special dining arrangements around the pool, creating memorable experiences for guests of all ages.



INDRA REGENT TRADITIONAL THAI SPA

The Indra Regent Traditional Thai Spa continues to operate, offering authentic Thai spa treatments rooted in ancient healing traditions. Guest can enjoy time-honored Thai massage techniques designed to restore balance, relieve stress, and promote overall well-being, all delivered by experienced therapists in a calm and relaxing atmosphere.

The Indra Regent Traditional Thai Spa offers an authentic Thai wellness experience that has been preserved and continues to exist in the heart of the hotel. Our treatments are performed by skilled, experienced therapists using traditional techniques passed down through generations. Each message focuses on improving blood circulation, relieving muscle tensions, reducing stress, and restoring natural body balance.

Unlike modern spa trends, our spa emphasizes true Thai healing methods in a peaceful, private setting, allowing guests to fully relax and reconnect with their body and mind. It is the ideal place for travelers and local guests seeking genuine Thai massage, proven therapeutic benefits, and excellent value for money.



FITNESS CENTER

At Indra Regent Hotel, guests have access to a fitness center, gym as part of the hotel's recreation facilities. The fitness room is designed to help you stay active during your stay and typically includes a range of basic workout equipment. The fitness area is usually self-service, open daily with flexible hours, and intended for guests who want to maintain their personal fitness routine while traveling. In addition to the gym, the hotel also offers other wellness options like an outdoor swimming pool and nearby spa massage services if you want a more relaxed or full-body experience after your workout.



BANQUETING AND CONFERENCE FACILITIES

Unique Themed Banquet & Conference Services

Indra Regent Hotel now offers special themed meeting and event services that go beyond ordinary conference packages – perfect for companies, associations and groups looking to create memorable and distinctive gatherings in Bangkok.



VERSATILE VENUE OPTIONS

You can choose from a variety of stylish spaces such as the elegant Emerald Ballroom for large celebrations and formal presentations, the Ming Palace with its Orient-inspired décor for culturally themed events, or smaller themed meeting rooms tailored to your group size and style. Each space offers flexible layouts that adapt to your theme and seating needs.

All themed events come supported with state-of-the-art audiovisual equipment and lighting effects that can be arranged to match the event theme—from dramatic lighting for gala dinners to branded screens for business presentations.



BANQUETING AND CONFERENCE FACILITIES

No	Functions Rooms	Dimention (M)			CAPACITY					
		Room Size	Square Meter	Ceiling Height	Theatre Style	Class room	Buffet	Cocktail	Banquet	Chinese
1	Emeral Ballroom	40X20	800.00	5.30	1,500	600	750	1,500	900	750
2	Ruby Room	24X12	288.00	3.00	400	180	1,260	400	300	260
3	Topaz Room	18X10	180.00	3.00	200	105	120	200	150	120
4	Sapphire A	12X6	72.00	2.50	60	30	-	-	-	-
5	Sapphire B	12X5	60.00	2.50	50	24	-	-	-	-
6	Executive Boardroom	7X4	28.00	2.50	-	14	-	-	-	-
7	Ming Palace	30X16	480.00	4.00	-	-	280	-	-	300
8	Gardedn Terrace	50X15	750.00	3.00	-	-	500	1,000	600	600
9	Botanica	10X15	150.00	3.00	-	-	90	-	90	-
10	Erawan Restaurant	13X12	156.00	3.00	-	-	70	-	70	60



YOUR DEAM WEDDING, PERFECTLY CRAFTED IN THE HEART OF BANGKOK.

Celebrate the most important day of your life at one of Bangkok's most iconic wedding venues, where timeless elegance meets endless creativity. Located in the very heart of the city, our venue offers unmatched convenience, flexible booking options, and a team dedicated to turning your wedding vision into reality.

At Indra Regent, we offer an unlimited Wedding Theme Possibilities, from fairytale fantastic and Romantic classics to cultural elegance and modern luxury, or creative wedding specialists design breathtaking themed weddings that are truly one of a kind. Every detail-décor, lighting, table settings, and ambiance is carefully curated to reflect your love story.

We understand that every couple is unique. That's why we offer flexible wedding packages, customizable layouts, and adaptable dates to suite your needs, budget, and dreams-without compromise. Whether you vision an intimate ceremony or a grand ballroom celebration, our beautifully designed venues provide the perfect backdrop for unforgettable moments, exquisite photography, and joyful memories with family and friends.



CUSTOMIZED THEME DECORATION

Instead of blank meeting rooms, the hotel can transform its banquet and function spaces with creative themed décor –whether it's cultural motif, corporate branding, seasonal festival theme, or celebration style setup. This helps make your event visually engaging and more memorable for attendees.

A variety of themed settings are available, including Harry Potter, Narnia, Maleficent, Kinaree, Fairytale Indra, and many more, allowing each event or dining experience to be uniquely tailored and truly unforgettable.

